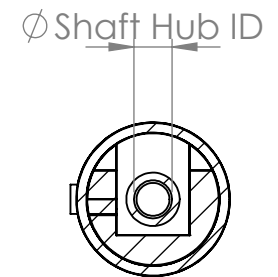
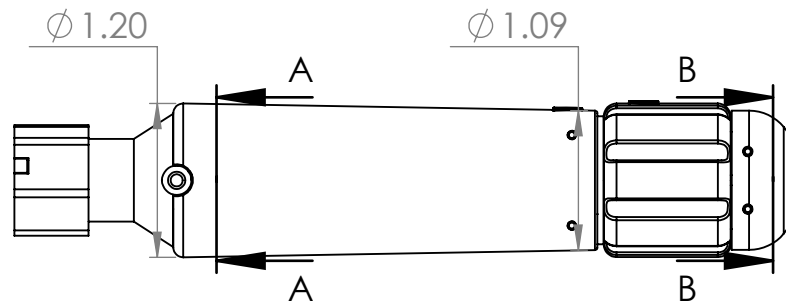


SECTION B-B
SCALE 1 : 1.5




SECTION A-A
SCALE 1 : 1.5

1. ALL CIRCLED NOTES, DIMENSIONS, AND FEATURES ARE TO BE INSPECTED.
2. PRODUCT SHALL BE FREE OF GREASE, OILS, DIRTS, OR GELS.
3. ALL COMPONENTS HAVE BEEN TESTED UP TO 45N.
4. ALL VISUAL INSPECTIONS SHALL BE PERFORMED WITH NORMAL OR CORRECTED TO NORMAL VISION UNDER NORMAL ROOM LIGHTING AT A DISTANCE OF 12-18 INCHES.
5. INSPECTION SHALL OCCUR PER AQL 4.0, C=0.
6. HANDLE KIT TO BE ASSEMBLED UTILIZING LOCTITE 4311 AND LOCTITE PRIMER 7701.

UNLESS OTHERWISE SPECIFIED:

DIMENSIONS ARE IN INCHES	
TOLERANCES (mm):	TOLERANCES (in):
X ± 5	X ± 0.2
X.X ± 2.5	X.X ± 0.1
X.XX ± 0.25	X.XX ± 0.01
X.XXX ± 0.125	X.XXX ± 0.005
Angular: ± 1.5°	

MATERIAL	PA12
Color	Black
DO NOT SCALE DRAWING	

PROPRIETARY AND CONFIDENTIAL
 THE INFORMATION CONTAINED IN THIS DRAWING IS THE PROPERTY OF MIDWEST INTERVENTIONAL SYSTEMS INC. ANY USE OR REPRODUCTION IN PART OR AS A WHOLE WITHOUT THE WRITTEN PERMISSION OF MIDWEST INTERVENTIONAL SYSTEMS INC IS PROHIBITED.

TITLE:			
Unidirectional Steerable Handle Kit			
SIZE	DOC. NO.	UoM	REV
A	SA0363	EA	RD01
EFFECTIVE DATE:		SCALE: 1:2	SHEET 4 OF 4